


Maw 20-24 Mar

7pm

# ORPHEUS

*in the*



# UNDERWORLD

Gan | By

JACQUES OFFENBACH

Cyfarwyddwr | Director

MATTHEW EBERHARDT

Arweinydd | Conductor

DAVID JONES

Ysgol Opera David Seligman

Opera School

Wedi'i chanu yn Saesneg | Performed in English  
Cefnogir gan Gronfa Cyswllt | Supported by the Connect Fund

Ages

12+

Oed

ROYAL WELSH COLLEGE  
OF MUSIC & DRAMA  
COLEG BRENHINOL  
CERDD A DRAMA CYMRU



WWW.RWCMD.AC.UK

# Orpheus in the Underworld

---

Cyflwynwyd gan | Presented by

**Ysgol Opera David Seligman Opera School**

Arweinydd  
**David Jones**

Cyfarwyddwr  
**Matthew Eberhardt**

Cyfarwyddwr Symudiadau  
**Daniel Hay Gordon**

Cerddoriaeth  
**Jacques Offenbach**

Gan  
**Hector Cremieux & Ludovic Halevy**

Fersiwn Saesneg gan  
**Jeremy Sams**

Perfformwyd yn Saesneg

Conductor  
**David Jones**

Director  
**Matthew Eberhardt**

Movement Director  
**Daniel Hay Gordon**

Music  
**Jacques Offenbach**

By  
**Hector Cremieux & Ludovic Halevy**

English version by  
**Jeremy Sams**

Performed in English

---

## Crynodeb | Synopsis

---

### Act I

**Tablo Cyntaf:**  
**Ystafell Wely Orpheus ac Eurydice**

I lawr ar y Ddaear mae priodas Orpheus ac Eurydice mewn trafferthion difrifol. Mae'r ddau ohonynt wedi chwilio am gysur mewn man arall: Eurydice gydag Aristaeus, bugail - Orpheus gyda Cynthia, nymff. Fodd bynnag, nid yw Aristaeus yr hyn y mae'n honni i fod - ac mae yntau ac Orpheus wedi cynllwynio i achosi marwolaeth Eurydice, a thrwy hynny ei hanfon i lawr i'r Isfyd, lle mae Aristaeus (Pluto) yn teyrnasu. Mae Barn y Cyhoedd yn ymyrryd ac yn mynnu y dylai Orpheus esgyn i Fynydd Olympus, cartref y Duwiau, i erfyn am ddychweliad ei wraig. Yn anfoddog, mae Orpheus yn cychwyn ar ei daith ddwyfol.

### Act I

**1st Tableau:**  
**Orpheus & Eurydice's Bedroom**

Down on Earth, the marriage of Orpheus and Eurydice is in dire straits. Each of them has sought consolation elsewhere: Eurydice with Aristaeus, a shepherd - Orpheus with Cynthia, a nymph. However, Aristaeus is not what he appears to be - and he and Orpheus have plotted to cause Eurydice's demise, thereby sending her down to the Underworld, where Aristaeus (Pluto) reigns supreme. Public Opinion intervenes and demands that Orpheus should ascend to Mount Olympus, the home of the Gods, to beg for his wife's return. Reluctantly, Orpheus sets off on his divine journey.

## **Ail Dablob: Mynydd Olympus**

Nid yw popeth yn dda ar Olympus chwaith. Mae difaterwch ac anfodlonrwydd yn teyrnasu. Mae Ambrosia yn ddi-liw ac yn ddiffas, a'r unig Dduw sy'n cael unrhyw hwyl yw lau, y cariadwr rhyfeddol a Meistr Cuddwisg. Pan mae Orpheus yn cyrraedd, wedi'i ysgogi gan Farn y Cyhoedd, i erfyn am ddychwelyd ei wraig, mae lau yn penderfynu y dylai'r cwmni cyfan fynd i Uffern i weld y sefyllfa drostynt eu hunain.

## **Act II**

### **Trydydd Tablob: Ystafell Wisgo Pluto**

Mae Eurydice wedi canfod nad yw ei herwgiad wedi bod yn hudolus ac mae'n hiraethu am gwmni mwy cyffrous na Pluto. Mae lau yn llwyddo i weddnewid ei siâp er mwyn treiddio i lety cyfrinachol Eurydice. Gyda'i gilydd maent yn bwriadu dianc.

### **Pedwerydd Tablob: Yr Isfyd**

Mae'n amser parti yn Uffern, gyda Pluto, cynhaliwr y parti, yn ei elfen. A'r parti yn ei anterth, mae lau ac Eurydice yn ceisio dianc ond cânt eu hatal gan Pluto wrth i Orpheus a'r Farn Gyhoeddus anorchfygol gyrraedd y lleoliad. Mae lau yn cytuno i adael i Orpheus arwain Eurydice yn ôl i'r Ddaear, ond ar yr amod nad yw'n troi tuag at yn ôl ac yn edrych arni. Gwaetha'r modd, nid yw hyn i fod - fodd bynnag, mae lau yn sicrhau bod pawb yn byw'n uffernol byth wedyn!

Credyd: Jeremy Sams, Martin Duncan

## **2nd Tableau: Mount Olympus**

All is not well on Olympus either. Apathy and discontent reign. Ambrosia is bland and boring, and the only God who's having any fun is Jupiter, philanderer extraordinary and Master of Disguise. When Orpheus arrives, impelled by Public Opinion, to plead for the return of his wife, Jupiter decides that the whole company should go to Hell to check the situation for themselves.

## **Act II**

### **3rd Tableau: Pluto's Boudoir**

Eurydice has found that her abduction has been rather less than glamorous and is pining for company more exciting than Pluto. Jupiter manages to change his shape in order to infiltrate Eurydice's secret quarters. Together they plan to escape.

### **4th Tableau: The Underworld**

It's party time in the fires of Hell, with Pluto, the host, in his element. At the height of the party, Jupiter and Eurydice attempt to escape but are stopped by Pluto just as Orpheus and the unstoppable Public Opinion arrive on the scene. Jupiter agrees to let Orpheus lead Eurydice back to Earth, but only on the condition that he doesn't turn around and look at her. Alas, this is not to be - however Jupiter ensures that everyone lives infernally ever after!

Credit: Jeremy Sams, Martin Duncan

This amateur production is presented by arrangement with Music Theatre International. All authorised performance materials are also supplied by MTI [www.mtishows.co.uk](http://www.mtishows.co.uk)

Cyflwynir yr cynhyrchiad amatur hwn trwy drefniant arbennig gyda Music Theatre International (MTI). Mae'r holl ddeunyddiau perfformio awdurdodedig hefyd yn cael eu cyflenwi gan MTI. [www.mtishows.com](http://www.mtishows.com)

# Cast Orpheus in the Underworld | Orpheus in the Underworld Cast



Aristaeus/ Pluto  
**Jamie Farrow**



Jupiter  
**John Rhys Liddington**



Orpheus  
**Rhys Archer**



Diana  
**Tara Camm**



Venus  
**Eleanor Woods**



Cupid  
**Louisa Ridge**



Juno  
**Emma Evans**

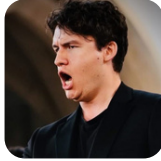


Minerva  
**Ronnie Enoch**



Morpheus  
**Siyu Wang**

Perfformio | Performing  
Maw 20 & 23 Mar:



John Styx  
**Charlie Epps**



Mercury  
**Jacob Parker**



Euridice  
**Beth Lewin**



Public Opinion  
**Hella Termeulen**

Perfformio | Performing  
Maw 21 & 24 Mar:



John Styx  
**Jonathan Reynolds**



Mercury  
**Ifan Thomas**



Euridice  
**Clara Greening**



Public Opinion  
**Niamh Pragnell Toal**

**Darganfyddwch mwy**

Gwybodaeth am y cast ac am rheini sy'n cefnogi eu hastudiaethau.

**Find out more**

Information about the cast and those who support their studies.



# Tim Creadigol | Creative Team

---

Cynllunydd Set | Set Designer  
**Jenny Ballantyne**

Cynllunydd Set Cynorthwyol |  
Assistant Set Designer  
**Jamie Murphey-Coles, Robin  
Smith**

Cynllunydd Gwisg | Costume  
Designer  
**Jules Dockstader  
Gethin Bevan**

Cynllunydd Goleuo | Lighting  
Designer  
**Gabriella Thomas**

Rheolwr Llwyfan | Stage Manager  
**Georgia Whittaker**

Rheolwr Llwyfan Technegol  
| Technical Stage Manager  
**Archie White**

Dirprwy Reolwr Llwyfan | Deputy  
Stage Manager  
**Alex Lewis**

Is-Reolwyr Llwyfan | Assistant  
Stage Managers  
**Holly Evans, Laurie Galvani  
Spieweck, Angelee Liou**

Technegwyr Swing | Tech Swings  
**Madi Harding, Amelia Tory,  
Charlie Ward**

Cynorthwy-ydd Goleuo | Lighting  
Assistant  
**Isla Milton**

Trydanwr Cynhyrchu | Production  
Electrician  
**Julia Grace Parker**

Effeithiau Sain | Sound Effects  
**Monty Murphy-Morris**

Cyfathrebwr Golygfaol | Scenic  
Communicator  
**Grae Pecchia**

Cynorthwywyr Gwisg | Costume  
Assistants  
**Daisy Braithwaite-Muriel, Lily  
Hamblin, Averil Tallack,  
Charlotte Thornton**

Cynorthwywyr Golygfaol | Scenic  
Assistants  
**Moss Hutcheon, Grae Pecchia,  
Axel Reynolds, Lara St John-  
Claire, Sebastian-Louis  
Thavaseelan, Faith Wilstead,  
Lucy Ramsey, Lily Leonard,  
Martha Fletcher, Demi Green,  
Max Smith**

Adeiladu Golygfaol | Scenic  
Construction  
**Louis A Smith, Emma Durand,  
Albie Ravenscroft, Leo Thame,  
Kyran Pike, Willow McKenzie**

Cyfarwyddwyr Cynorthwyol |  
Assistant Directors  
**Tetiana Hnatiuk, Tynan  
Thorogood.**

Arweinydd Cynorthwyol |  
Assistant Conductors  
**Beth Fitzpatrick  
Asia Bonucelli**

Hyfforddwr Feiolin | Violin Coach  
**Daisy Au-Yeung**

# Corws | Chorus

---

Lauren Williams  
Alice Martin  
Marie Quemerais  
Kirsty McRobbie  
Cerys Herbert-Stott  
Nazanin Dast-Afkan  
Jennifer Morafkova  
Eve Carey

James Oakley  
Yichen Zhang  
Linzhen Yang  
Jack Irwin  
Siyu Wang  
Joby Dixon  
Charlie Epps

# Cerddorfa | Orchestra

---

Arweinydd | Conductor  
**David Jones**

Ffliwt | Flute  
**Asher Penny**

Obo | Oboe  
**Ellen Wilkinson**

Clarinet 1 | Clarinet 1  
**Rita Feditsa**

Clarinet 2 | Clarinet 2  
**Yuyilin Pan**

Basŵn | Bassoon  
**Wendy Lloyd**

Corn 1 | Horn 1  
**Rhys Ferguson**

Corn 2 | Horn 2  
**Isabel Meakin**

Timpani  
**James Ayre**

Feiolín 1 | Violin 1  
**Mattea Little**  
**Zadie Lanzino**  
**Abigail Germany**  
**Annabelle Gray**  
**Emma Hamilton**

Feiolín 2 | Violin 2  
**Vlad Savenko**  
**Evelyn Newey**  
**Nick Francis**  
**Siân Evans**

Fiola | Viola  
**Sam Wilson**  
**Isabel Dixon**  
**Joseph May**

Soddgrwth | Cello  
**Josh Eyre**  
**Ezra Rutere**  
**Agatha Bell**

Bas Dwbl | Double Bass  
**Faith Bennett**

# Bywgraffiadau | Biographies

---

## Matthew Eberhardt

Cyfarwyddwr

Mae credydau cyfarwyddo Matthew Eberhardt ar gyfer Opera North yn cynnwys Street Scene gan Weill (a enwebwyd am wobr South Bank) a Love Life (a enwebwyd am Wobr Opera Ryngwladol), The Pearl Fishers gan Bizet, Trouble in Tahiti gan Bernstein (a ddarledwyd ar Sky Arts), yn ogystal â llwyfannu cyngherddau o Fidelio (a ffrydiwyd yn fyw o Neuadd y Dref Leeds), Billy Budd (Gwyl Aldeburgh), a Big Sing: Wonderland Restored. Mae credydau cyfarwyddo ychwanegol yn cynnwys A Midsummer Night's Dream a Die Fledermaus (y ddau yng Ngholeg Brenhinol Cerdd a Drama Cymru); Cendrillon a The Cunning Little Vixen (y ddau yng Nghonservatoire Brenhinol Birmingham); Three Decembers/The Medium (Conservatoire Brenhinol yr Alban). Roedd yn gyfarwyddwr cyswllt ar Alice's Adventures in Wonderland gan Will Todd (Opera Holland Park a Theatr Linbury). Mae Matthew yn cyfarwyddo cynhyrchiad newydd o L'Etoile gan Chabrier ar gyfer Opera Zuid yn nhyrnor y Gwanwyn 2026.

## David Jones

Arweinydd

Ganwyd David Jones yn Iwerddon, ac astudiodd yng Ngholeg y Drindod, Dilyn, y Royal Northern College of Music (Cymrodoriaeth lau mewn Arwain), a'r Tanglewood Music Center, UDA. Perfformiodd David gyda llawer o brif gerddorfeidd y DU ac Iwerddon gan gynnwys BBC Scottish Symphony Orchestra, BBC Philharmonic Orchestra, Ulster Orchestra, National Symphony Orchestra of Ireland, RTE Concert Orchestra, Scottish Chamber Orchestra a'r Irish Chamber Orchestra. Mae David hefyd wedi gweithio gydag amryw gwmnïau opera ledled y DU ac Iwerddon, gan gynnwys Scottish Opera, Opera North, English National Opera, Opera Cenedlaethol Cymru, Wexford Festival Opera, Lyric Opera yn Nulyn a'r Irish National Opera. Ledled Ewrop a thu hwnt, mae David wedi perfformio gydag Opera Luzerne, Opera Zuid, Cerddorfa Symffoni Radio Hannover, Cerddorfa Symffoni Athens a Sinfonia Varsovia. Mae David yn ymgorffori'r holl brofiad hwn yn ei waith fel Arweinydd Preswyl yng Ngholeg Brenhinol Cerdd a Drama Cymru lle y mae'n ymroi'n helaeth i ddatblygu a mentora talent cerddorol, boed yn chwaraewyr cerddorfaol, yn gantorion opera, neu'n arweinwyr.

## Matthew Eberhardt

Director

Matthew Eberhardt's directing credits for Opera North include Weill's Street Scene (nominated for a South Bank award) and Love Life (nominated for an International Opera Award), Bizet's The Pearl Fishers, Bernstein's Trouble in Tahiti (broadcast on Sky Arts), as well as concert stagings of Fidelio (live streamed from Leeds Town Hall), Billy Budd (Aldeburgh Festival), and Big Sing: Wonderland Restored. Additional directing credits include A Midsummer Night's Dream and Die Fledermaus (both Royal Welsh College of Music and Drama); Cendrillon and The Cunning Little Vixen (both Royal Birmingham Conservatoire); Three Decembers/The Medium (Royal Conservatoire of Scotland). He was associate director on Will Todd's Alice's Adventures in Wonderland (Opera Holland Park and Linbury Theatre). Matthew is directing a new production of Chabrier's L'Etoile for Opera Zuid in Spring 2026.

## David Jones

Conductor

David Jones was born in Ireland, studied at Trinity College, Dublin, the Royal Northern College of Music (Junior Fellowship in Conducting), and the Tanglewood Music Center, USA. David has performed with many of the UK's and Ireland's major orchestras including the BBC Scottish Symphony Orchestra, BBC Philharmonic Orchestra, Ulster Orchestra, National Symphony Orchestra of Ireland, RTE Concert Orchestra, Scottish Chamber Orchestra and the Irish Chamber Orchestra. David has also worked with numerous opera companies across the UK and Ireland including Scottish Opera, Opera North, English National Opera, Welsh National Opera, Wexford Festival Opera, Lyric Opera Dublin and the Irish National Opera. Throughout Europe and further afield, David has performed with the Luzerne Opera, Opera Zuid, Hannover Radio Symphony Orchestra, Athens Symphony Orchestra and Sinfonia Varsovia. David incorporates all this experience into his work as Conductor in Residence at the Royal Welsh College of Music and Drama where he is very committed to developing and mentoring musical talent, be it orchestral players, opera singers, or conductors.

# Staff CBCDC | RWCMD Staff

---

Cyfarwyddwr Cerddoriaeth |  
Director of Music  
**Tim Rhys-Evans**

Pennaeth Astudiaethau Lleisiol |  
Head of Vocal Studies  
**Fiona McAndrew**

Cyfarwyddwr Cerddoriaeth  
Ysgol Opera David Seligman |  
Musical Director for David  
Seligman Opera School  
**James Southall**

Rheolwr Cerddorfaol ac  
Ensemble | Orchestral and  
Ensemble Manager  
**Rhian Pullen**

Tîm Gweinyddu Cerddoriaeth |  
Music Admin Team  
**Aimee Badger**  
**Helen Whitmore**  
**Beth Graham-White**  
**Lucy Champion**  
**David Williams**

Meistr Corws | Chorus Master  
**Oliver Till**

Hoffwn ddiolch i'n tîm o  
athrawon canu a'n hyfforddwy'r  
am eu holl help gyda'r prosiect  
hwn.

Repetiteur  
**Alexander Wigglesworth**

Rheolwr Cynhyrchu |  
Production Manager  
**Rob Clarke**

Goruchwyliwr Cynhyrchu |  
Production Supervisors  
**Liz Isaac, Frankie Carlin, Helen  
Comerford**

Goruchwyliwr Goleuo | Lighting  
Supervisor  
**Elanor Higgins**

Goruchwyliwr Gwisg | Costume  
Supervisor  
**Jenn Jacobs-Evans**

Goruchwyliwr Golygfaol |  
Scenic Supervisor  
**Laura Martin, Louis Smith**

Goruchwyliwr Cynllynydd |  
Design Supervisor  
**Sean Crowley, Lucy Hall,  
Shane Erickson**

We would like to thank our  
team of singing teachers and  
coaches for all their help on  
this project.

---

## Diolch i | Thanks to

Tony Burke at Pocket Publications  
Sue Davies  
Richard Parry  
Roger and Rhian Thomas  
Connect Fund members